

RC *Altimeter #3 PRO*

**Altitude data recording and monitoring system with telemetry and
microSD card**



Manual version: 1.0

Content

Introduction	3
How it works	3
Key features.....	3
System requirements	4
Hardware	4
Specifications	4
Using the RC Altimeter #3 PRO module	5
Powering the module.....	5
Mounting the module	5
Operation	6
PC USB Interface	6
Firmware upgrade	6

Introduction

The RC Altimeter #3 PRO was designed to provide a lightweight, compact device for measuring and recording altitude over time. It was designed specifically for use onboard a radio controlled (R/C) aircraft, but should be useful in other applications. RC Altimeter #3 PRO transmits current altitude, maximum altitude achieved in flight, vario, battery voltage, temperature and number of interferences detected at the field via an RF link to the ground unit (RC T2000). It also records all this data to microSD card for later review. If RC GPS module is connected to the module it will also transmit latitude, longitude, ground speed, trip distance and distance from the R/C pilot and will save all GPS data for 3D flight review with GoogleEarth and SeeYou software.

How it works

The RC Altimeter #3 PRO module uses a high-resolution barometric pressure sensor system to detect small changes in air pressure that occur due to changes in altitude. It is sensitive enough to detect altitude changes of less than one meter. This also makes it sensitive to changes in local weather and air pressure variations. The intended use of this device is for measuring short-term altitude changes in R/C aircraft. Long-term altitude readings will vary considerably due to varying atmospheric conditions. It is best used to measure relative changes in altitude. The module uses a 433MHz two way link to transfer data from your R/C aircraft to the RC T2000 ground module. Data transfer is digital so there won't be any noise or incorrect data received. All parameters are recorded to microSD card for later review or flight.

Key features

- Lightweight at only **12 grams with telemetry and JR cable**
- Small · 33 mm x 20 mm x 9 mm
- With the **RC T2000** module it will work as a variometer with audio tone
- Records data to **microSD** card for later review
- Integrated **FXJ switch** function
- PC **USB** interface for firmware updates
- Export data to JPG image, KML (Google Earth) file and IGC (SeeYou) files
- Wide range of input power: 4 – 20 volts DC. Power it from your aircraft receiver battery
- Every unit is tested in pressure chamber
- Transmits measured parameters in real time
- With the RC GPS module it will transmit additional information such as ground speed, trip distance and distance from the R/C pilot and will record all GPS data required, so you could later review your flight in 3D with Google Earth or with SeeYou

System requirements

- PC with one of the following operating systems: Win98, Windows ME, Windows NT, Windows 2000, Windows XP, Windows Vista.
- Available USB port.
- SD card reader
- 2 megabytes Hard Drive space.

Hardware

Figure 1 shows the RC Altimeter #3 PRO hardware module. The module includes a 433MHz transceiver for transmitting data to the ground with a 17cm long antenna. The JR cable is used to connect it to a radio-controlled aircraft's onboard receiver, which powers the RC Altimeter #3 PRO module. The 3-pin connector serves as a servo pass-through or as output for FXJ switch function. A modular connector is used for firmware updates with PC and for connection to RC GPS module.

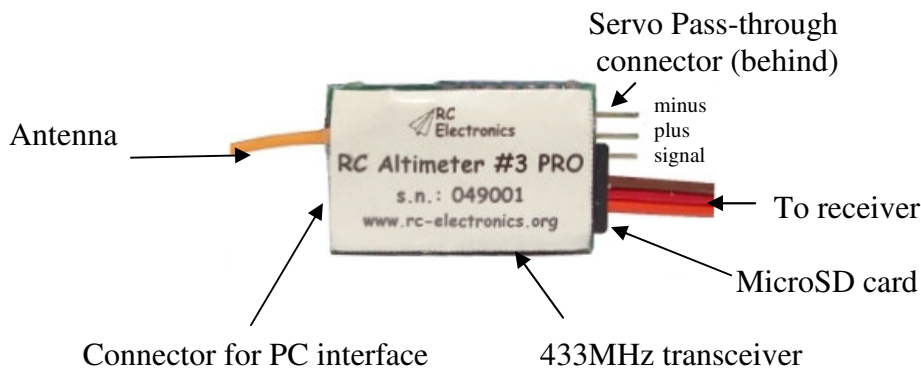


Figure 1. The RC Altimeter #3 PRO Hardware

Specifications

Board Dimensions	1.29" x 0.78" x 0.35" 33 mm x 20 mm x 9 mm
Weight	12 grams (0.42 oz.)
Temperature Range ¹	-10°C...+60°C
Input Voltage Range	4.0 – 20.0 volts DC
Input Current	36 milliamps
Measured voltage	4.0 – 18.7 volts DC
Memory capacity	64MB SD card included (can be used up to 2GB SD card)
Displayed altitude resolution	1 meter, 1yard or 1 foot
Output power	10mW (10dBm) at 433MHz
Range ¹	More than 1 km (depends on antenna installation)

¹ Specifications are taken from component ratings and system limits and may not have been tested to the full extent of the specified ranges.

Using the RC Altimeter #3 PRO module

Powering the module

To power the RC Altimeter #3 PRO module, plug the 3-pin connector on JR cable into a spare receiver channel on the R/C aircraft receiver. If you do not have an open receiver channel, you can plug the RC Altimeter #3 PRO into the receiver, and the plug that channel's servo into the RC Altimeter #3 PRO servo pass-through connector. Be sure to observe proper polarity when plugging the connector into the receiver. For non-R/C use attach a battery to the servo pass-through connector. A JST style connector can plug directly into the 3-pin pass-through connector. Again, be sure to observe proper polarity, or damage may result. Orientation of the 3-pin pass-through connector is shown on figure 1.

Mounting the module

The RC Altimeter #3 PRO module can be mounted in one of two ways:

- Inside the fuselage of the aircraft. In this case there should be an opening of at least 0.5 sq. cm to allow air pressure inside the fuselage to equalize with the atmospheric pressure outside the aircraft. For many aircraft, the fuselage is not airtight and is sufficiently vented to the outside air.
- On the outside of the aircraft. In this case the pressure sensor should be at a right angle to the airflow for maximum accuracy. This means the air stream is flowing across the hole in the pressure sensor, not directly into or away from it. If possible, mount it away from the prop wash, because the measured altitude can increase by over 60 meters due to airflow from the prop.

The module can be mounted using double-sided tape, cable ties, or Velcro. Velcro is recommended so that the module can be removed and interfaced with the PC for downloading altitude data.

Be sure that the module is not touching any metal surfaces. Shorting the metal contacts on the module will result in a radio system failure.

Don't mount the module on top of power batteries when using electric planes because they get hot and this can affect the altitude readings by up to 30m.

Also be sure to keep the module away from water, fuel and other liquids.

Always range check the aircraft's radio system before flying with the RC Altimeter #3 PRO module installed to verify that there is no system interference.

For maximum range a full length of antenna should hang free from the fuselage.

Operation

Each time you turn on the module it will set zero altitude and create a new flight. When the module is setting zero altitude you must make sure that the module is stationary. In order to view data you must use the RC T2000 module. Via the RC T2000 module you are able to change any logger settings and set zero/create new flight.

PC USB Interface

The PC USB interface connects to the RC Altimeter #3 PRO module's 4-pin connector. The RC Altimeter #3 PRO gets power from the USB interface so no external battery is required. USB drivers can be downloaded from www.rc-electronics.org under Downloads -> Software. After installation a virtual COM port will be created. Please be sure that this virtual COM port is number 1...10.



Figure 2. USB interface

Firmware upgrade

The RC Altimeter #3 PRO module provides the ability to upload new firmware to the module. No installation is required for the Firmware Upgrade software. You can download it from www.rc-electronics.org. After downloading run the Firmware Uploader v1_2.exe file. Select the correct COM port and then specify the new firmware file (RC_Altimeter_v3.xx.hex). After you have selected the firmware connect RC Altimeter #3 PRO to USB interface and wait for about 4s and then file click the "Upload" button. After pressing the "Upload" button, the upload of the new firmware will start. You should only use a firmware update file specifically provided for the RC Altimeter #3 module. Using an incorrect update file will render the RC Altimeter #3 PRO module inoperable.

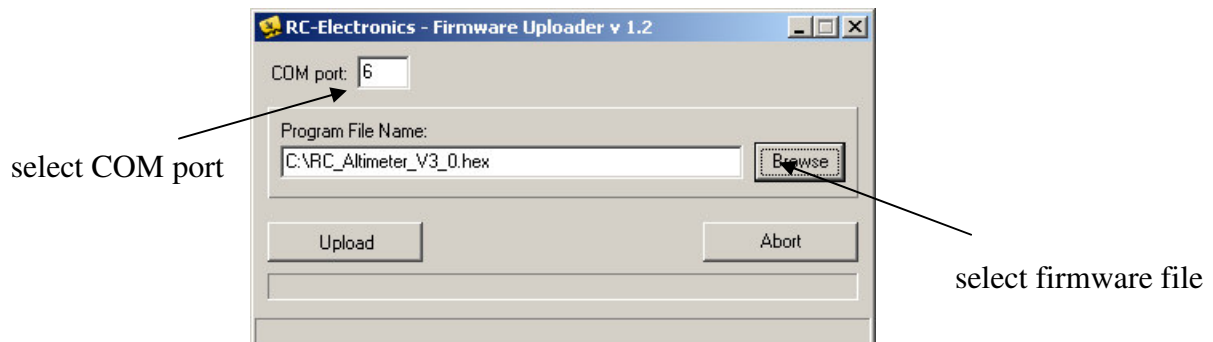


Figure 6. Firmware uploader